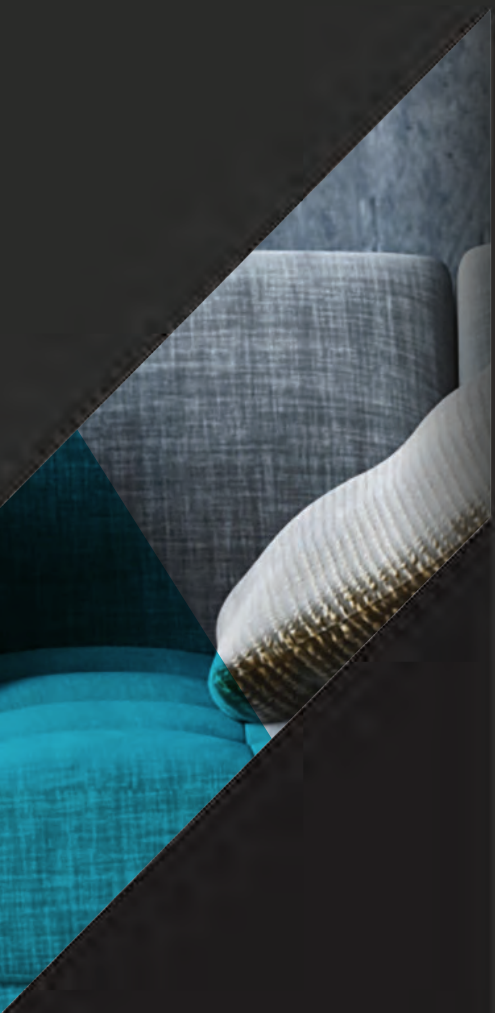




NuCote™
FLOORING PERFECTION



DecoCem™
CEMENTITIOUS FLOORING

Cementitious Decorative Screed System.
Versatile, durable & achieves a coloured
concrete finish. Applied seamlessly to most
substrates. Suitable for Commercial &
Residential spaces.

WALL & FLOOR SYSTEM



Residential Buildings




Commercial Industry




EASY TO CLEAN
& MAINTAIN



AESTHETIC &
DECORATIVE



NuCote DecoSkim can be used on most common substrate including concrete, under coat plaster and fibre-cement boards on overheads, vertical and horizontal substrate.





NuCote DecoCem is a self-levelling, two component, high performance, cementitious compound formulated to produce a hard wearing, smooth, crack free, flat surface while being very easy to apply.





DECORATIVE RANGE WALL & FLOOR SYSTEM

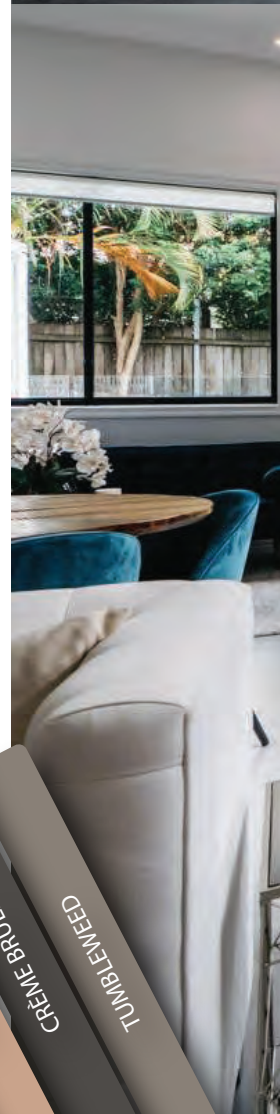
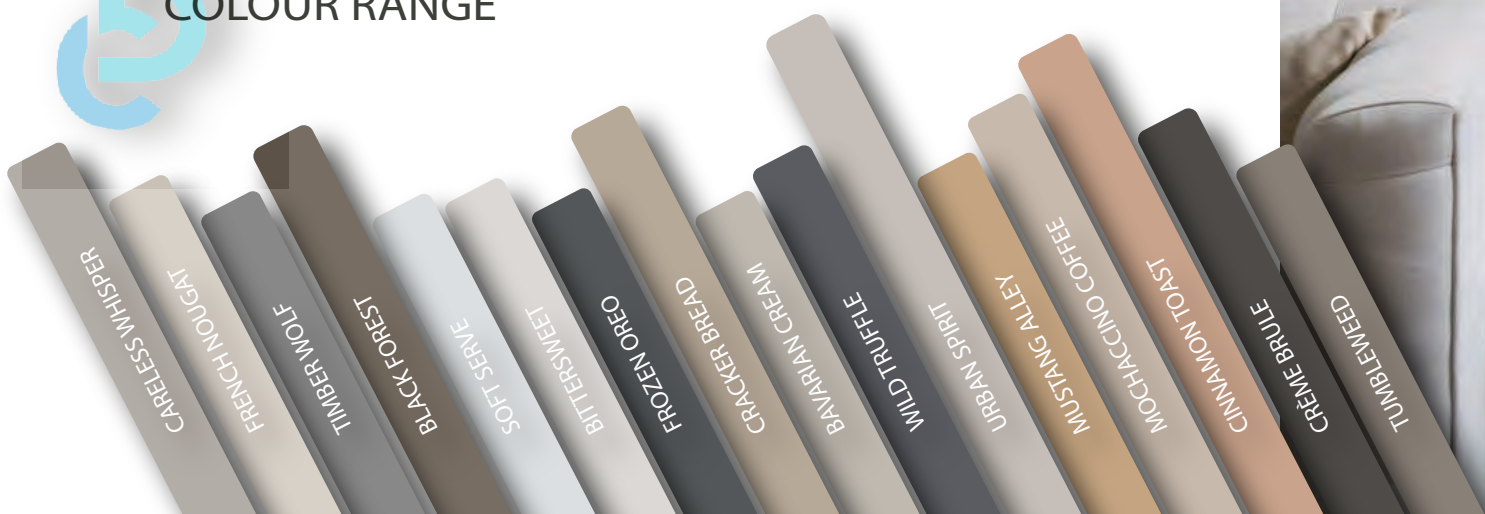
DecoSkim Decorative System HORIZONTAL & VERTICAL | MORTAR

ADVANTAGES	APPLICATION	DecoSkim COMPONENTS	RECOMMENDED USE
<p>Applied vertical & horizontal. Excellent Bond to Concrete. Shrinkage compensated. Rapid setting. Can be left as fair face finish, or over coated. Seamless & easy to clean.</p>	 <p>Trowel Applied Smooth Sponge Rough Brush</p>	 <p>1 Part Just add Water</p>	<p>Structural repairs. Scraper coat. Hair line crack filler. Face finish with Topcoat.</p>

DecoCem™ Decorative Flooring CEMENTITIOUS UNDERLAYMENT | COATING

ADVANTAGES	APPLICATION	DecoCem™ COMPONENTS	RECOMMENDED USE
<p>Non-Toxic. High flow properties. Dimensionally stable. Self-healing properties (30min). Applied directly onto prepared surface. Seamless & easy to clean.</p>	 <p>Self-Levelling Trowel Applied</p>	 <p>Part A - Hardener Part B - Aggregate</p>	<p>Face finish with Topcoat. Hygiene applications. Underlayment for floor coverings. Refurbishing of concrete. Floor levelling.</p>

COLOUR RANGE





www.nucote.co.za
+27 (0) 11 421 0313



DISAVOWAL: The customer acknowledges and understands that after delivery, the goods will have left the control of RigiFoam (Pty) Ltd, and that the customer will be responsible for the unpacking of and connection/installation of the goods. The customer acknowledges that it is his/her further responsibility to ensure that a fully qualified and competent person is used to install the goods to ensure their effective operation. Failure by the customer to ensure the installation of the goods, according to the written instructions of the manufacturer and/or supplier, by a fully qualified and competent person, may result in the failure of the goods, injury, loss, or damages to the customer. Accordingly, and in this event, RigiFoam (Pty) Ltd accepts no responsibility for any loss or damages that might arise by reason of death or personal injury to any person engaged in the installation or use of the goods thereafter, subject to the provisions of the Consumer Protection Act 68 of 2008.